



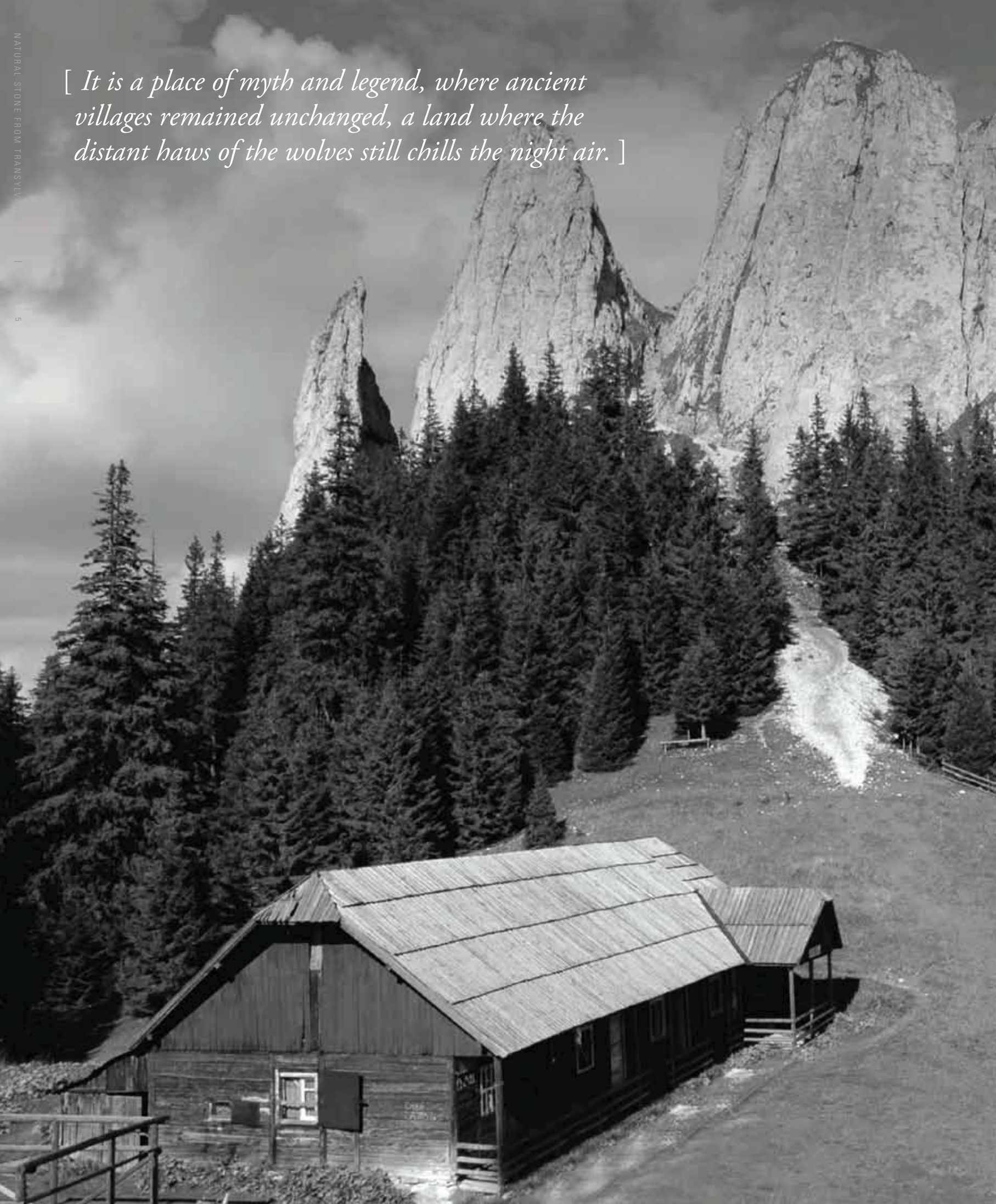
RESIDO  
natural stone

**NATURAL STONE FROM TRANSYLVANIA**





[ *It is a place of myth and legend, where ancient villages remained unchanged, a land where the distant haws of the wolves still chills the night air.*  ]



# CONTENT

---

|                                |            |
|--------------------------------|------------|
| <b>INTRODUCTION</b>            | <b>06</b>  |
| QUARRY                         | 06         |
| COMPANY                        | 08         |
| FACTORY                        | 10         |
| THE MATERIALS                  | 12         |
| <b>INDOOR FLOORING</b>         | <b>14</b>  |
| POLISHED                       | 12         |
| HONED                          | 24         |
| ANTIQUE - BRUSHED              | 28         |
| ANTIQUE - HAND TUMBLED BRUSHED | 38         |
| ANTIQUE - PATTERN              | 44         |
| <b>INDOOR WALLS</b>            | <b>52</b>  |
| SPLIT FACE                     | 54         |
| BRICKS                         | 62         |
| GRAFFIATURA                    | 66         |
| SLABS                          | 74         |
| <b>OUTDOOR FLOORING</b>        | <b>78</b>  |
| HONED                          | 80         |
| ROMAN OPUS PATTERN             | 82         |
| BUSH HAMMER BRUSHED            | 84         |
| COBBLES                        | 86         |
| <b>OUTDOOR WALLS</b>           | <b>90</b>  |
| BUSH HAMMER GROOVED            | 92         |
| HONED                          | 94         |
| POLISHED                       | 96         |
| SLABS                          | 98         |
| <b>SPECIAL PRODUCTS</b>        | <b>100</b> |
| STAIRS                         | 102        |
| WINDOW TOPS                    | 104        |
| BATHS, SINKS, SKIRTING         | 106        |
| TECHNICAL SPECIFICATIONS       | 108        |





The excavator is pulling a block out from the mountain



# TRANSYLVANIA QUARRY

Transylvania, or as Romanians call it Munții Apuseni, which means the Mountains of the Setting Sun, and the Carpathian Mountains are a range forming an arc roughly 1,500 km across Central and Eastern Europe, making them the second longest mountain range in Europe. This beautiful area possesses concentrated thermal and mineral waters as well as commercial deposits of a wide variety of natural resources, including gold, silver, iron and limestone.



Laid down over countless millenia, limestone is formed by layers of marine organisms deposited on the sea floor and compressed to create a stone of intriguing texture and character. Subsequently, limestone is characterized by its degree and infinite variety of fossilization. Long before it reaches the consumer as a kitchen floor or as a decorative wall, limestone undergoes a series of processes that begin in the quarry. Extracting the stone requires the use of specialized machinery to cut it precisely without causing any damage to the stone. Throughout the years, quarrying techniques and equipment have evolved and improved, increasing the amounts of useful stone and its availability.

Resido's quarry is located in the heart of Transylvania, neighboring Babeni - a small, authentic Romanian village, surrounded by green hills. Resido is the sole owner quarrying Transylvania Limestone and the only provider of this specific resource in the world. Therefore, there is no competition in sourcing the stone, and the raw materials are only available via Resido's quarry, making for a heightened sense of quality control as well as exclusive products for dealers.

Resido excavates approximately 800 cubic meters per month. From a total of fifteen potential benches, the quarry is currently working in six benches. The quarry is sufficiently equipped with state-of-the-art Italian chain saws, several excavators and pay loader Caterpillars. The quarry is also equipped with elaborate drillers and extensive diamond wire machines, which allow exploration of the quarry in different benches at the same time. This produces an optimal range of materials, as some projects call for stone from a few specific benches. Different benches produce blocks of varying colors, totalling to fifteen different available colors - from light grey to dark beige. Some projects request a homogenous effect, so it must be ensured that the blocks from the various benches are uniform. On the other hand, some projects call for other patterns and for a mix of colors - such design also requires the knowhow and the comprehension of where to excavate.

Resido's range of limestone tiles offers variations for any project, from a rustic, aged and antique look to a clean and contemporary feel. This comprehensive range of materials and machinery secures Resido's ability to successfully manage any global project.





# COMPANY PROFILE

Founded in 2004 in Cluj, Romania, as a quarrier and processor of natural stone, Resido has progressively distinguished its material, Transylvania Limestone, as a prominent element in architecture and construction. The company offers tiles, specialty flooring and wall cladding, slabs as well as cut-to-size architectural work - a broad range of decorative elements, including ornate detailing for entry gates, a complex roof design, panels, and cubic elements for archways, columns, balconies and stairs.



Within just a short time after Resido's establishment, Transylvania Limestone became synonymous with the city of Cluj, as it was chosen to decorate some of the city's prominent monuments – The National Bank Building, Piazza Matei Corvin's Fountain and the famous statue of Lupa Capitolina. Today, a range of traditional and contemporary limestone architecture uses Transylvania Limestone, as well as many street corners in Cluj and in its surrounding cities. Over the years, Resido has completed hundreds of projects around the world, resulting in a developed and solid reputation within its sector.

The company strives to remain up to date in technology, always maintaining a competitive advantage. In 2011-2012, the company massively invested in the purchase of a new production line for cutting and polishing slabs to answer the growing global demand. Among its various attributes, Transylvania Limestone is frost-resistant, used for wall cladding in all climate conditions – in freeze/thaw areas as well as desert climates – and its color, tonality and structure make it a preferred material for architects and home owners. Its available resources are exponential – from a total of fifteen potential benches, Resido is quarrying currently only in six benches – and each bench reveals a different color.

Thanks to the fact that Resido independently owns its quarry and factory, it takes great care to include clients as part of the entire production process - from the quarrying of blocks, through to all of the fabrication steps, and concluding with the loading of trucks and containers. As needed, Resido is also able to combine the production capacity of all products and to produce large quantities in a short amount of time. Resido maintains solid quality control by identifying the right materials with the appropriate placement. Resido trains and educates all its employees to expertly select specified materials per project, helping both ends of the design process - the architects on one end, and the factory on the other.

## Transylvania's limestone sparks global interest

During Resido's inception, Transylvania Limestone was not well-known outside of Romania. It became progressively more and more popular in Europe, in the United States and in Asia, as it was used for extensive, high profile projects.

The first major success for Resido came with the completion of several important projects in the United States and England. Transylvania Silver and Transylvania Bicolor were chosen to decorate the floors of a high-end residential complex and the walls of a five-star hotel lobby. The team relies on its global experience to remain strong in the international sector, continually benchmarking conditions regarding what is developing in the world market.

With this knowledge, the production facilities are upgraded and advanced as dictated by the needs of the marketplace. Over the years, Resido has completed hundreds of projects around the world and has developed a prominent reputation. Resido continues to supply material for its local market as well as for high-profile projects around the world.





Water & Stone - The fountain of downtown Cluj, Romania.



# THE FACTORY

Resido's factory is located in Baci, the industrial region of Cluj, Romania and sits on an approximate 20,000-square meter parcel of land. It has grown to employ a staff of 90 workers since its inception. It is fully equipped with state-of-the-art machinery from Italy and Turkey, including gang saw, bridge saws, polishing lines, guillotines for split-faced stones, tumbled machines and gantry cranes. Five production lines cut the blocks into a total of 14,000 sqm a month for flooring tiles, stairs, window tops, decorative walls and slabs. Surface finishes include: honed, polished, antiqued, bush hammered, brushed, sandblasted and split-faced.

Resido remains up-to-date with technological advances, maintaining a constant competitive edge. Early in 2012, the company significantly invested in the purchasing of a production line for cutting slabs and large dimension tiles. This step was made in order to answer the global increase in demand for such products. Resido's team relies on its global experience to remain strong in the international sector, continually benchmarking conditions regarding what is developing in the world market. With this knowledge, the production facilities are upgraded and advanced as dictated by the needs of the marketplace.







Cutting a block, Resido Factory



# TRANSYLVANIA STONE RANGE

Transylvania Limestone is a name applied to various types of limestone, particularly found only in Resido's quarry in Transylvania. It has a variety of natural colors and textures that give a warm, rich feel to stone floors, walls and other architectural elements.

Limestone has a timeless beauty, but it is also chosen for its practical qualities - as a building gets older, and as its facade weathers, there is a distinctive character in the way limestone ages.

When clients select limestone, it is to cast a warm sense of permanence. It has an inherent ability to bring formality and naturalness to a room and strength and stability to a project's design. Because of Transylvania Limestone's sheer range of textures, colors and uses, individuals have the ability to make strong choices based on their inherent tastes and the compatibility to the project at hand. All the materials are available in various sizes and finishings, according to the client's demand.



Transylvania Light



Transylvania Light Beige



Transylvania Light Bicolor



Podeni



Transylvania Rice



Transylvania Rice Beige



Transylvania Rice Bicolor



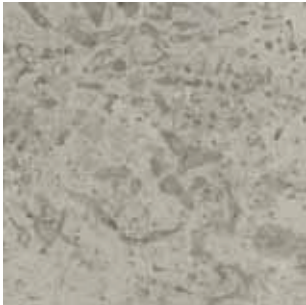
Transylvania Brown



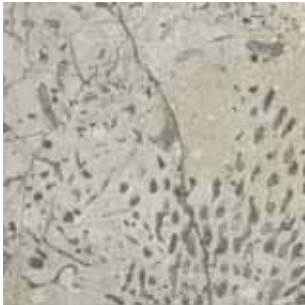
Transylvania Coral Beige



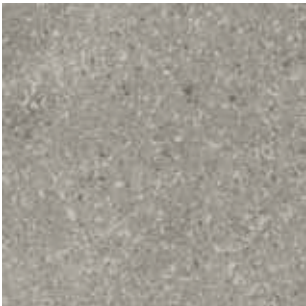
Transylvania Coral



Transylvania Deep Coral



TransylvaniaV G rey



Transylvania V Light



Transylvania V Dark



Transylvania Silver



Transylvania Silver Bicolor



Transylvania Golden Wheat









I N D O O R   F L O O R I N G





## TRANSYLVANIA LIGHT & SILVER OCTAGON

Transylvania Light is an elegant ivory, off-white color material, scattered with small and round white fossils, along with some darker, slightly bigger fossils. The veins of this stone are of a silver color. This is a warm, tranquil and light material, suitable for many types of design – classical, contemporary, Mediterranean, farmhouse style and more.

Transylvania Silver has dark grey tones marked by tiny grey fossils. Its veins are even darker in its grey color and it has continued movement. This is a warm, tranquil and light material with a clean and contemporary feel.

In this photo, the flooring is a combination of warm and light limestone with a contrast of Transylvania Silver insertion, which brings a strong character to the floor and gives a unique design to the whole room. Utilizing two materials of the same origin in one surface is ideal in terms of texture and look. The finishing of this floor tile is polished, giving it a glossy, shiny look, suitable for luxurious, yet naturally warm elements. The Transylvania Silver tiles are a diamond shape cut, inserted in an octagon pattern.

The durability of Transylvania Light translates to an ideal choice for high footfall areas of the home, while its low porosity also makes it a good choice for bathrooms and wet rooms. This tranquil stone contains a ready-worn patina, which conjures up a feeling of timelessness in the home.

Transylvania Light



Transylvania Silver





Transylvania Light octagon 60x60x2 with Transylvania Silver insertion 10x10x2, polished





Transylvania V Grey, 80x80x2cm, polished

## TRANSYLVANIA V GREY

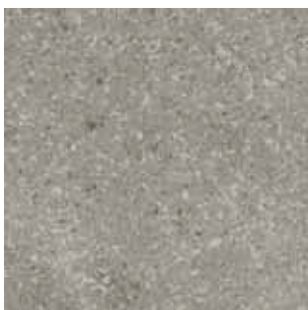
Transylvania V Grey has subtle grey tones like a cloudy sky on an autumn day. Scattered with very little fossils of similar hues, contrasted by long, darker veins, the material brings a feeling of light and space to contemporary interiors, while still remaining clean and fresh.

In this photo, the large dimensional tiles, clean texture and straight edges offer an impression of a greater indoor space with a modern feel. The polished finishing and straight cuts are suitable for such modern and spacious projects.

The durability of the Transylvania V Grey stone translates into an ideal choice for high footfall areas of the home, while its low porosity also makes it a good choice for bathrooms and wet rooms.



Transylvania V Grey







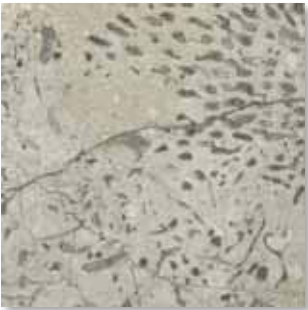
## TRANSYLVANIA DEEP CORAL

Transylvania Deep Coral has a bluish pastel background with large shells, dense fossilizations and rare quartz veins. It's a tile that has proven versatility. Transylvania Deep Coral's oceanic look brings relaxation and strong character to modern decor.

Applying Transylvania Deep Coral stone to interior flooring as in these two photos offers a sense of tranquility and serenity, while creating a unique ambient surface. This is the most natural way to bring the ocean floor's history and intrigue right into one's home. This floor can be supplied with straight or rounded edges, in any of the different finishings and sizes.

The durability of this stone translates to an ideal choice for interior, low and medium footfall projects, while its low porosity also makes it a good choice for bathrooms and wet rooms.

Transylvania Deep Coral









Transylvania Silver 60 x free length x 2, straight edges cut, polished

## TRANSYLVANIA SILVER

Transylvania Silver has dark grey tones with tiny grey fossils. Its veins are even darker in its grey color and it has continued movement along its tiles. The material has a clean and contemporary feel.

This Carpathian stone, selected not only for its durability, but also for its inherent style, has a high compatibility for office design, breaking the cold, glassy and metal aesthetic for a more natural, warm ambient, in the same color range.

Polishing Transylvania Silver flooring and cutting it straight, as it is shown here, gives this project its modern appearance. It can also be applied with various different finishes, making it ideal for residential and commercial projects.



Transylvania Silver







## TRANSYLVANIA RICE

Transylvania Rice is a classically beautiful limestone with a mixture of white and grey hues accented by subtle tiny algae fossils in high density. This tranquil color and texture can be the perfect background for both modern and rustic design.

As applied in the kitchen's photo of this page, Transylvania Rice tiles, rough wood beams, modern-colored kitchen furniture and bright lighting create a blended design of old and new, completing one another. The tiles are supplied with a honed finish and diamond-sawn square-cut edges. Its honed surface and consistent quality make this a popular and versatile stone.

Using Transylvania Rice honed tiles can be used to dramatic effect on both walls and floors, and are ideal for use in many interiors, including kitchens, living room hallways and bathrooms. It can also be used for exterior flooring in balconies and wall cladding.

Transylvania Rice





Transylvania Rice, straight edges, 50 x free length x 2, honed





## TRANSYLVANIA SILVER BICOLOR

With its subtle progression from beige to grey tones, Transylvania Silver Bicolor limestone is at home in the most provincial or the most unconventional of interiors. Its mixture of beige and grey can be controlled and the blocks are specially selected for their natural character. The Silver Bicolor material has a medium grain and a mix of beige and grey backgrounds with some white small fossils on its dark side and some darker fossils on its beige side – making it a very unique material.

In this presentation of a bathroom, the Silver Bicolor floor tiles are decorating the stone-made bath tub, showcasing a room that brings nature inside by using two dominant elements – water and stone. The tiles are honed and straight cut, giving the floor a matte look, suitable for natural, warm designs. Transylvania Silver Bicolor is recommended for use on floors and walls. It is well suited for floors that undergo high levels of footfall and in almost any application. It is used in carving, building and flooring, both internally and externally.

Transylvania Silver Bicolor





Transylvania Silver Bicolor, 30 x free length x 2, honed





Transylvania Grey composition, rounded edges, 30 X free length X 2, brushed

# TRANSYLVANIA GREY COMPOSITION, ANTIQUE

Since 2011, Resido has also been offering Transylvania Grey Antique tiles. The overall appearance of this stone is pale, silver grey with some lighter and medium grey shading and blending throughout the stone. It is scattered with very little white and off-white fossils and some darker veins. Blending the different tiles of this antique collection in the right ratio creates an authentic look and design for antique flooring.

In this photo, the top surface of the stone has been brushed. Brushing the stone changes the patina on its surface to a naturally worn and lightly antiqued appearance, simply adding some extra character to the finished product. Being a high-resistance stone makes it an ideal choice for high traffic areas in residential and commercial indoor projects.



Transylvania Rice



Transylvania V Light



Transylvania Silver



Transylvania V Dark





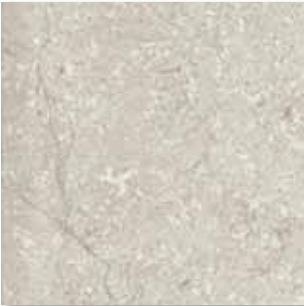


## TRANSYLVANIA LIGHT & RICE

Transylvania Light tiles, which have a light color, smooth texture and strong veins, combined with Transylvania Rice tiles, which are slightly darker, with a grainy texture and rare quartz veins, create a unique design and an interesting display.

As demonstrated in the photo on this page, the floor tiles are brushed and slightly rounded in their edges. The elegant play between brushed flooring and light colored tiles creates a warm and classic design. Customers looking for a hard-wearing floor, which appears to be already aged, take the most interest in this pairing. Transylvania Light and Rice are ideal for use in many interior floorings, including kitchens, living room hallways and bathrooms. It can also be used for wall cladding.

Transylvania Light



Transylvania Rice





Transylvania Light and Rice, rounded edges, 30x60x2, brushed





Transylvania Beige composition, rounded edges, 50 x free length, brushed

# TRANSYLVANIA BEIGE COMPOSITION, ANTIQUE

This floor is a variation game, played with four different types of tiles – Transylvania Light Beige, Rice Beige, Brown and Golden Wheat – with each tile offering its varied textures. Placement of the tiles in the right ratio create a specific look of antiqued, ready-worn flooring and give any project a distinguished presence.

In this photo, the combination of the four stones adds a strong character and freshness to the space. Its application is ideal for use in many interior floorings, including kitchens, living room hallways and bathrooms. It can also be used for wall cladding.



Transylvania Brown



Transylvania Light Beige



Transylvania Rice Beige



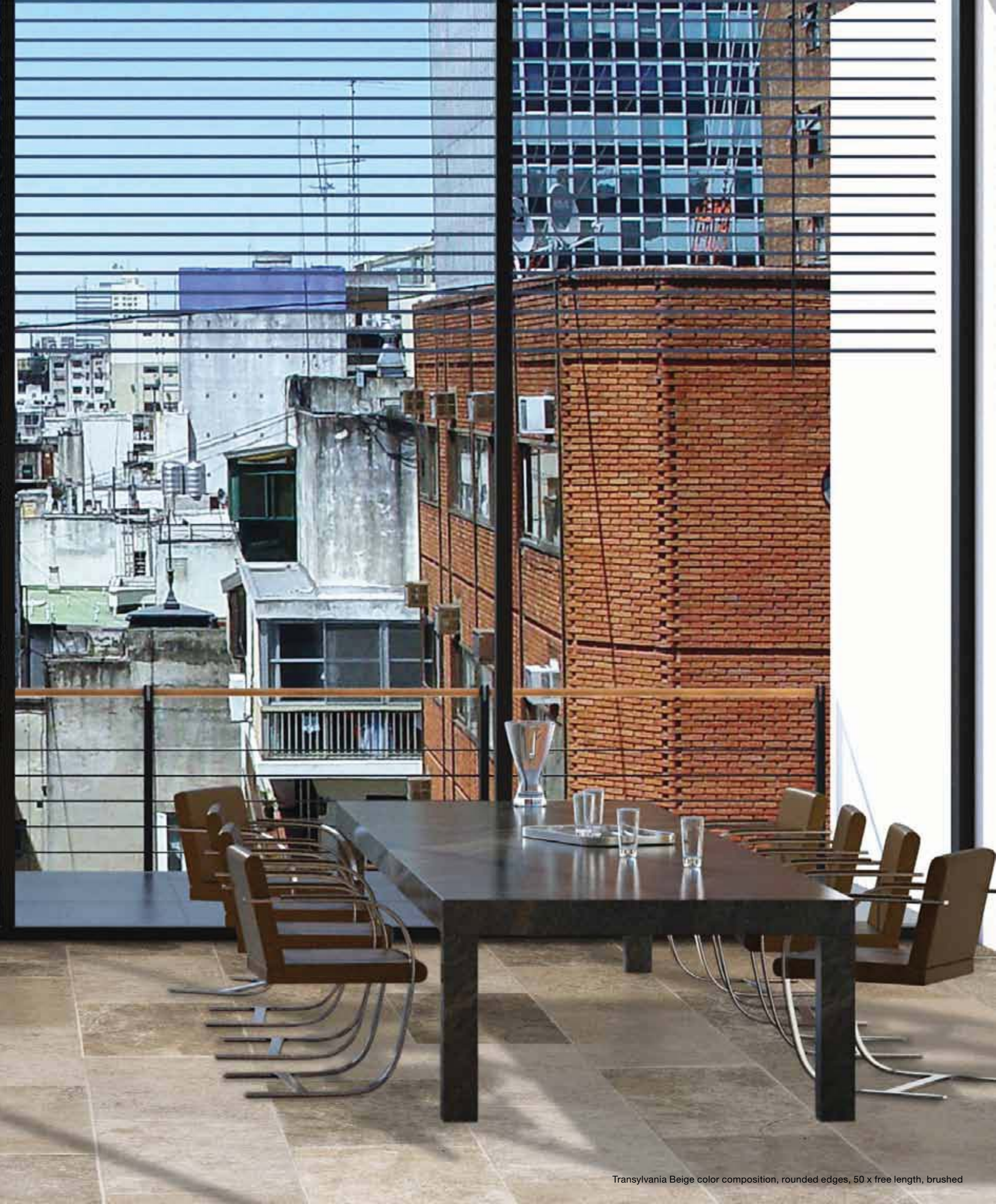
Transylvania Golden Wheat















## TRANSYLVANIA CORAL ANTIQUE

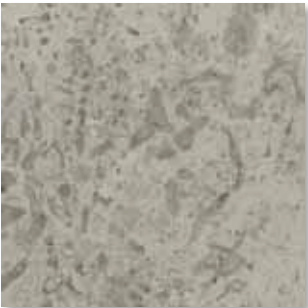
Transylvania Coral brushed is branded by its signature shade and imbedded fossils on a grey, bluish background with very rare quartz veins.

Transylvania Coral brushed warms up contemporary interiors with its subtle hue and quiet texture. It pairs well with monochromatic decor and acts as a complimentary accent to minimalist design features.

The kitchen floor displayed in this photo looks almost like a natural shell rock - Coral tiles that were hardly brushed were used in order to emphasize the antique surface of this limestone. This floor can be supplied with straight or rounded edges in any of the various finishings and sizes.

The durability of Transylvania Coral translates to an ideal choice for interior, low and medium footfall projects, while its low porosity also makes it a good choice for bathrooms and wet rooms. Additionally, it can also be used for wall cladding or as a stand-alone product in a bathroom or a kitchen for flooring or countertops.

Transylvania Coral





Transylvania Coral, straight cut edges, 30 x free length x 2, brushed





Transylvania Light, 50 x free length x 2, hand tumbled and brushed

## TRANSYLVANIA LIGHT ANTIQUE



Transylvania Light is an elegant ivory, off-white colored material, scattered with small, round white fossils along with some darker, slightly bigger fossils. The veins of this stone are of a silver variety. This is a warm, tranquil and light composition, suitable for many types of design – classical, contemporary, Mediterranean, farmhouse-style and more.

The Transylvania Light collection also includes a range of fine, hand-finished materials that are available in several sizes. Resido's antique flooring materials have weathered generations and history. Each piece has been shaped into a unique and authentic surface of incomparable character and authenticity. True pieces of European history, these coveted materials endow any project with an added dimension of original antique products.

Demonstrated in these photos, Transylvania Light hand-tumbled and brushed is applied to a kitchen floor and to an entrance hall to enhance the authentic atmosphere of a European farmhouse. This classic Transylvania Light hand-tumbled and brushed stone comes in large format tiles. Each tile is individual and colors vary through a range of off-white tones. Customers looking for a hard-wearing floor, which appears to be already aged, take the most interest in this stone.

Transylvania Light



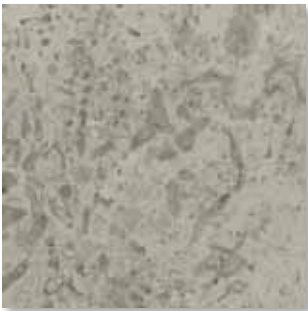


## TRANSYLVANIA ANTIQUE COMPOSITION

Classic Transylvania Grey limestone is a combination of our most solid and least porous natural limestones. The color of this collection includes the darkest and lightest greys from our quarry. The tiles are chipped to remove any squareness from the sawn edges. The finished edging appears antiqued and worn, which is very popular for period properties and restoration projects or for projects that combine contemporary and old world elements. The limestone surface finish is semi-honed and brushed to create a level, yet still lightly textured surface.

This limestone comes in large format tiles. Each tile is individual and colors vary through a range of Transylvania Silver, Rice, Coral, Light Bicolor, V Grey with a bit of Rice Bicolor tiles. Customers looking for a hard-wearing floor, which appears to be already aged, take the most interest in this stone. This floor is varied regarding color and texture. As seen in this image, this textural limestone offers a mélange of neutral grey and crisp linen shades with intricate fossil detailing - making it ideal for riffing off of contemporary décor as well as historical and restoration projects.

Transylvania Coral



Transylvania Rice Bicolor



Transylvania Rice



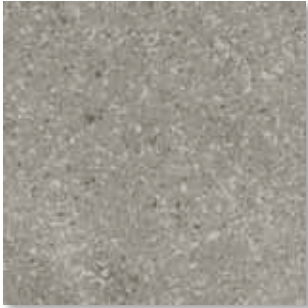
Transylvania Light



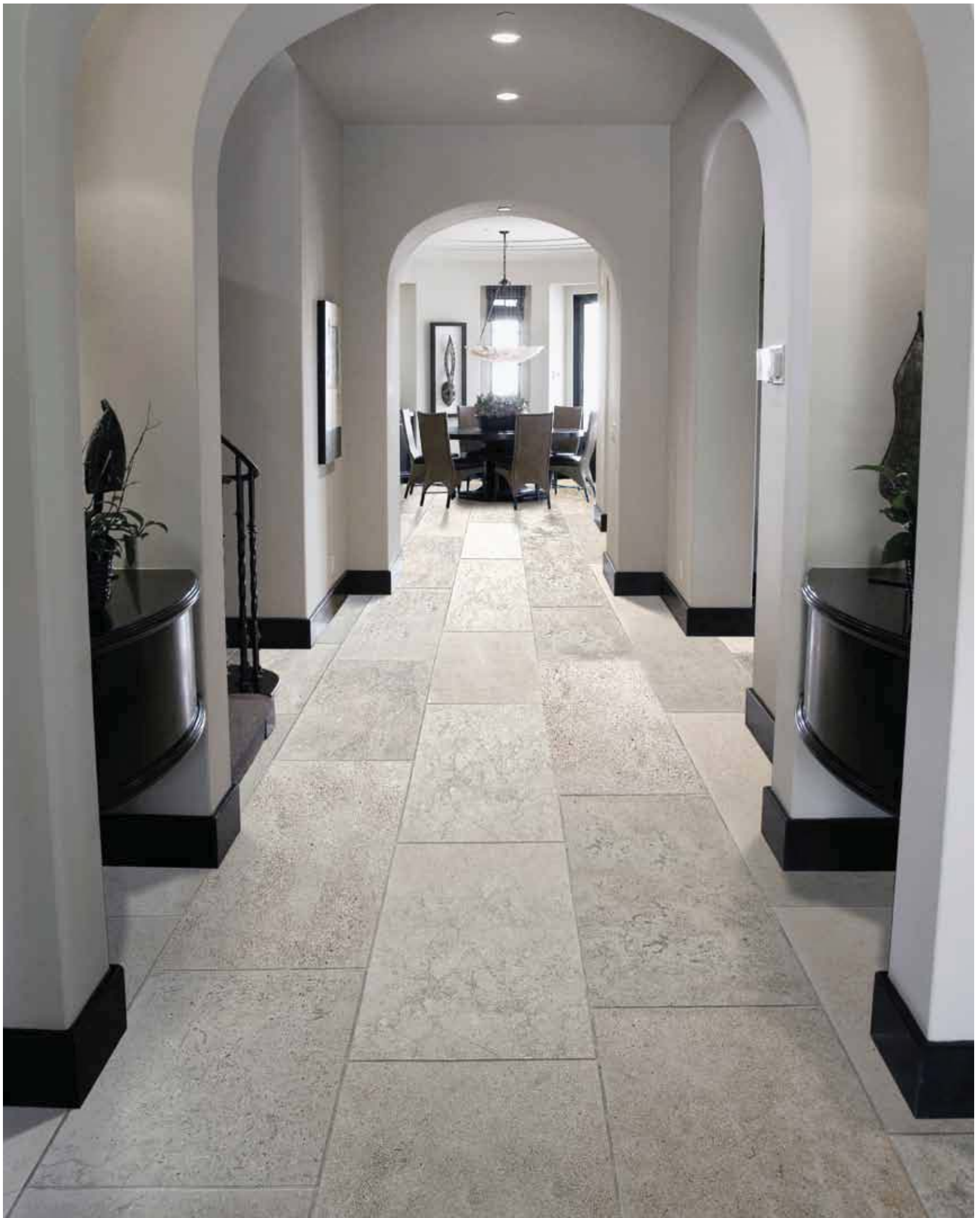
Transylvania Silver



Transylvania V Grey







Transylvania Antique composition, 50 x free length x 2, hand tumbled and brushed





## TRANSYLVANIA V DARK ANTIQUE

Transylvania V Dark has subtle grey tones like a cloudy sky in an autumn day. Scattered with little fossils of similar tones contrasted by long, darker veins, this material brings a feeling of light and space to contemporary interiors, while still remaining clean and fresh. Its interesting texture makes it an ideal blend of old and new.

In this photo, the edges of these large, rectangular and brushed tiles are manually chipped and rounded. Our antique flooring materials have weathered generations and history. Each piece has been shaped into a unique and authentic surface of incomparable character and authenticity. True pieces of European history, these coveted materials endow any project with the added dimension of original antique products.

The Transylvania V Dark material is hard-wearing, making it suitable for high traffic areas in commercial and residential projects.

Transylvania V Dark







## TRANSYLVANIA ANTIQUE VILLA PATTERN

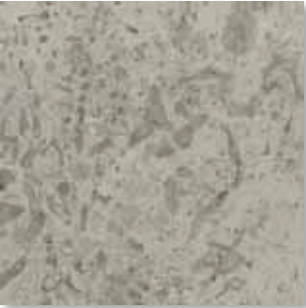
### PATTERN

These limestone floor tiles are arranged in a Villa Opus pattern containing large size tiles, offering a grandeur ideal for larger rooms. The color of this collection includes the darkest to lightest greys and beiges from our quarry. Each large format tile is individual and colors vary through a range of Silver, Rice, Coral, V Grey, Light Bicolor with a bit of Rice Bicolor tiles.

The finished edging appears antiqued and worn, which is very popular for period properties and restoration projects. The limestone surface finish is semi-honed and brushed to create a level, yet still lightly textured surface – as seen in this image. Customers looking for a hard-wearing floor, which appears to be already aged, take the most interest in this stone.

This floor is unique due to its varied color and texture, and it is perfect for paving outdoor terraces, gardens and walking trails in warm-climate areas, in addition to complementing an antiqued interior design.

Transylvania Coral



Transylvania Rice Bicolor



Transylvania Rice



Transylvania Light

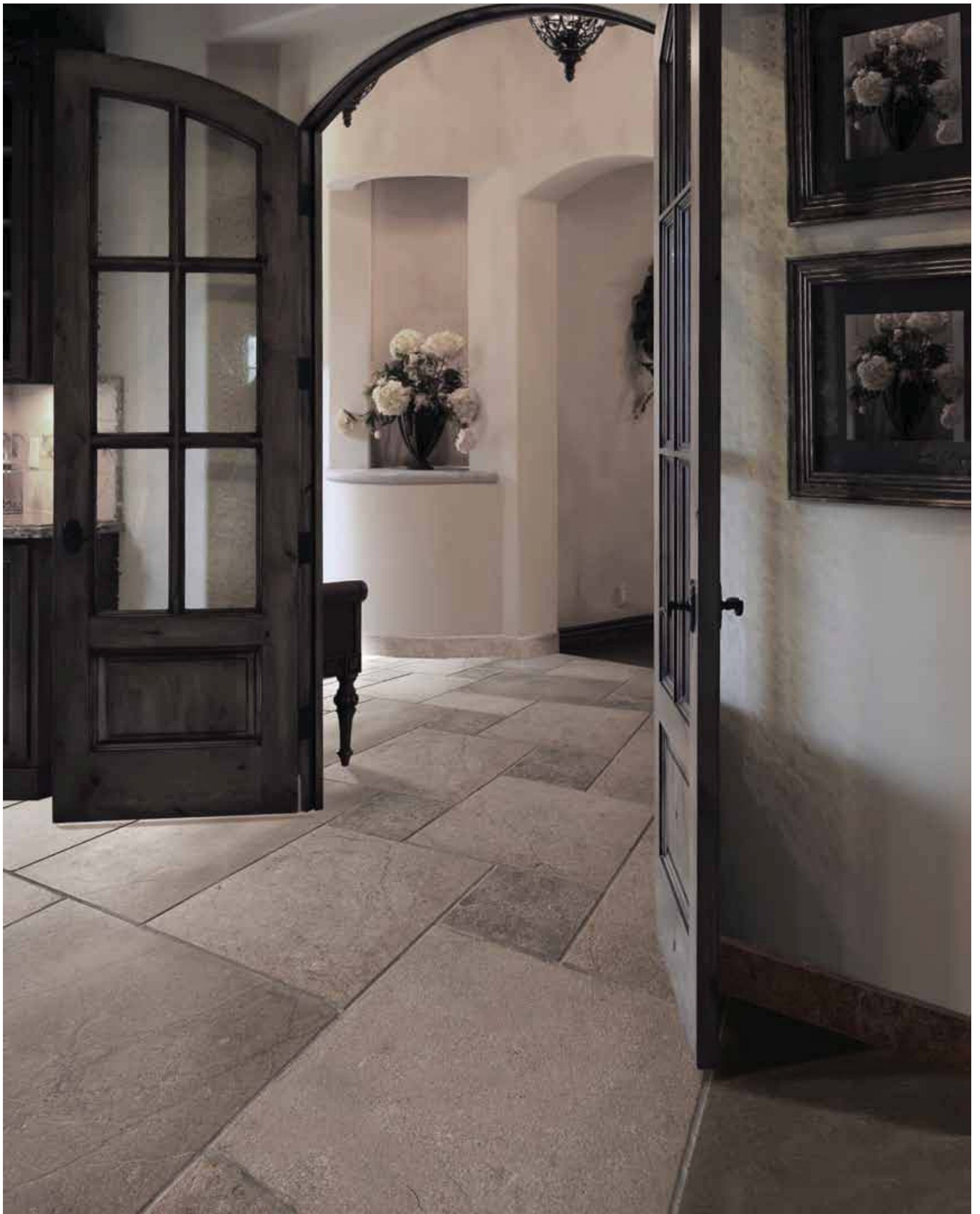


Transylvania Silver



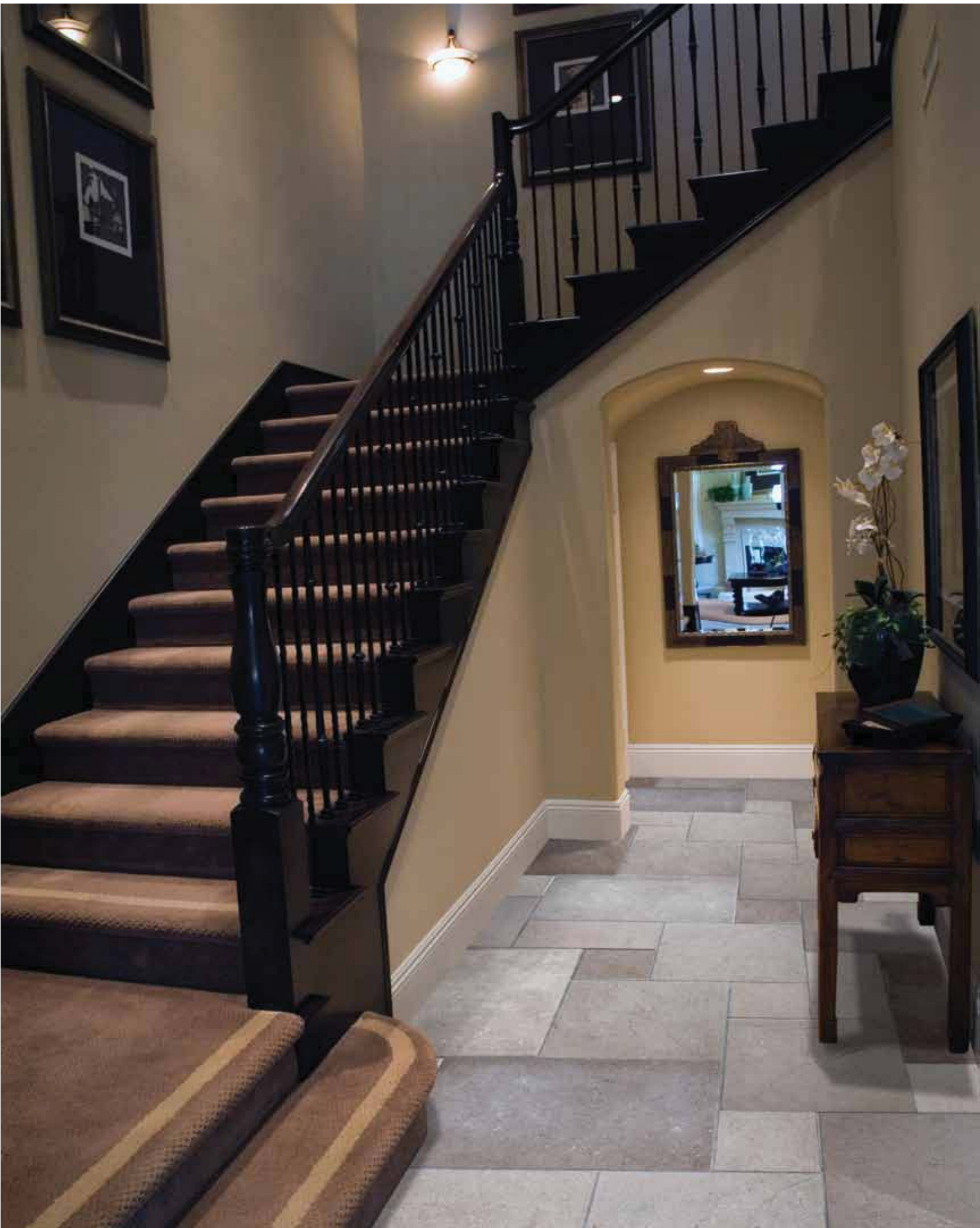
Transylvania V Grey





Transylvania Antique Villa Pattern, rounded edges, brushed





Transylvania Beige, Antique brushed, Villa Pattern

# TRANSYLVANIA BEIGE COMPOSITION - VILLA PATTERN

## PATTERN

The Transylvania Beige collection is a distinctive, premium quality limestone product with a blend of all the beige limestone offerings from Resido's quarry: Transylvania Light Beige, Rice Beige, Brown and Golden Wheat.

With brushed edges and finish, this flooring gives way to a heavily aged appearance. As seen in the image, the yellow/brown antique stone tiles have a brushed texture reminiscent of years in heavy traffic. This limestone floor tile is supplied in a Villa Opus pattern containing large sized tiles, which offer a grandeur perfect for larger rooms. Transylvania Antique limestone floor tiles are strong, durable and suitable for domestic and light commercial use. The antique stone tile's versatility garners a fitting application for conservatories, hallways, bathrooms and kitchen flooring as well as exterior uses in warm climates, such as terraces and balconies.



Transylvania Brown



Transylvania Golden Wheat



Transylvania Rice Beige



Transylvania Light Beige







[ A variation game, using four different colors - Transylvania Light Beige, Rice Beige, Brown and Golden Wheat, creates a unique product which brings earthy feel to home design ]







Transylvania V Grey Antique, Villa Pattern, brushed

# TRANSYLVANIA V GREY ANTIQUE

Transylvania V Grey has subtle grey tones like a cloudy sky on an autumn day. Scattered with very little fossils of similar tones contrasted by long, darker veins, this material brings a feeling of light and space to contemporary interiors, while still remaining clean and fresh. Its interesting texture makes it an ideal blend of old and new, which can be seen in this complementary picture.

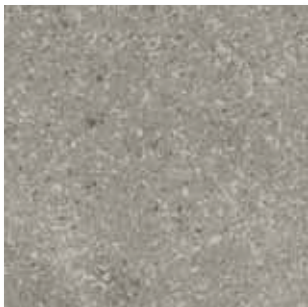
## PATTERN

The Villa Pattern V Grey brushed is a contemporary foundation for bright colored contrasts of painted walls and other decorative elements. Transylvania Antique limestone flooring tiles are a distinctive, premium quality limestone product with chipped edges and a tumbled finish-giving way to a heavily aged appearance. These uniform antique stone tiles have a brushed texture reminiscent of years in heavy traffic. Arranged in a Villa Opus pattern containing large size tiles, it offers a grandeur perfect for larger rooms. Transylvania Antique limestone floor tiles are strong, durable and suitable for domestic and touristic use, such as hotels, conservatories and restaurants. This floor is also ideal for the pavement of outdoor terraces, gardens and walking trails in warm climate areas.



Transylvania V Grey Antique brushed, Villa Pattern close up

Transylvania V Grey









I N D O O R   W A L L S



## TRANSYLVANIA BICOLOR SPLIT FACE

Transylvania Bicolor split face limestone is a direct variation of the classic Transylvania Limestone with a mix of beige and blue backgrounds. Its durability and versatility make it suitable for almost any wall guard-pedestal and interior decoration for walls.

With its speckled texture and subtle progression from light to darker tones, Transylvania Bicolor split face limestone has a warming effect on rustic and natural looking interiors or even on ultra modern decor, as seen here.







Transylvania Bicolor split face 5 x free length x 2



## TRANSYLVANIA GREY AND LIGHT SPLIT FACE

The combination of Transylvania Grey and Light split face limestone is a direct variation of the classic Transylvania. It has a natural rock surface ranging from light to dark grey, which creates the perfect naturally rustic or contemporary background.

The lightly-hued offering of these two split face tiles is an appealing launching ground for bright pops of color and interesting statement decor, as seen in this image. With its speckled texture and subtle progression from light to darker tones, Transylvania Grey and Light split face limestone has a warming effect on ultra modern or very rustic and naturally-looking interiors. Its endurance and versatility make it suitable for wall guard pedestals and interior decorative elements for walls.

Transylvania Grey split face



Transylvania Light split face





Transylvania Grey and Light, split face, 5 x free length x 2







[ The combination of Transylvania Grey and Light split face limestone is a direct variation of the classic Transylvania Limestone ]







Podeni split face, 5 x free length x 2

# PODENI SPLIT FACE

Podeni is a porous, yellow/beige limestone with a soft, warm look. This material is recommended only for wall cladding and for use in architectural elements because of its softness. The advantage of this soft stone is that it is easy to sculpture and it is very resistant to vertical weather conditions.

Resido uses 5 cm width strips to create natural split face rock bricks. Podeni split face has the very natural look of its original rock in raw form. This product beautifully fits the warm interior of a countryside-style design or a contemporary home seeking a more natural, elemental feel as seen in this image.

Podeni is well-known in Romania because in the period of the Communist regime, it was used for cladding the second largest building in the world after the Pentagon: the Palace of the Parliament in Bucharest, Romania.



Podeni split face







## TRANSYLVANIA GREY BRICKS

The subtle beauty of river washed stone is the inspiration for tumbled limestone bricks. Versatile enough to satisfy a range of design tastes, these mixed grey bricks have the capacity to bring a strong and eclectic urban element into the household or create a calming oasis outdoors.

Mixed Transylvania Grey stones give a strong character to modern lofts or other contemporary design. They wonderfully complement rough wood furniture and other warm elements, as seen in the images here.

Transylvania bricks











Transylvania Light and Grey bricks, 5 x free length x 2

# TRANSYLVANIA LIGHT AND GREY BRICKS

The versatile combination of Transylvania Light and Grey limestone bricks with a tumbled finish adds an element of character and intrigue to a room. Scattered with very little fossils of similar tones contrasted by darker veins, this material brings a feeling of light and space to contemporary interiors.

As seen here, the delicate shades are a striking mix, warming up interiors with their natural look while playing off of stark, modern furniture and design elements.



Transylvania bricks







Transylvania Grey, grafatura, 30 x free length x 2



# TRANSYLVANIA GREY GRAFFIATURA

Perfect for creating a peaceful haven, Transylvania Grey Limestone Graffiatura is an utter canvas for delicate and artful interiors, distinguished by its raw texture and luminescent shading.

Its combed rock creates a texture of thin, delicate lines throughout the inherent roughness of the stone. With proper lighting, bold stripes create a play of light and shadow that give this decorative wall depth, as seen in this image. Its unique finishing is adaptable for decorating walls with a fitting contemporary look.







NATURAL STONE FROM TRANSYLVANIA



*[ Perfect for creating a peaceful haven,  
the Graffiatura Grey Limestone is an utter canvas for  
delicate and artful interiors, distinguished by its raw  
texture and luminescent shading ]*





## TRANSYLVANIA GREY GRAFFIATURA, GROOVED

Raw texture and subdued tones are the signature attributes of Transylvania Grey with grooved graffiatura tiles. This exclusive choice offers a clean and natural result. The combed rock creates a texture of thin, delicate lines imbedded within rough stone. In proper lighting, bold stripes create a play of light and shadow that give this decorative wall depth, as seen in the image here.

This product was added with 2 cm engraving between each strip to give extra depth to the wall and create a decorative effect of combined fine lines and thick lines along its surface.





Transylvania Grey, grafatura, 30 x free length x 2, plus grooved 2 cm bottom edge





Podeni graf atura, 30 x free length x 2



## PODENI GRAFFIATURA

Podeni Limestone in the graffiatura finish contains a soft open grain, exposing its finish, with warm beige and soft gold color variations of the Podeni Gold found in Transylvania. Podeni's fine grain produces a beige to light creamy color with yellow undertones. Some light yellow fossils may make an appearance, but it is infrequent, in addition to occasional open fossil formations. Podeni Limestone's naturally distressed surface and edges offer a desirably aged, reclaimed look, paired with its golden yellow shading.

This material is only recommended for cladding and architectural elements because of its softness. Combined with the graffiatura finish, the combed rock creates a texture of thin, delicate lines in the rough stone. With the proper lighting, bold stripes create a play of light and shadow that give decorative walls depth, as seen in this image.

Podeni is well-known in Romania because in the period of the Communist regime, it was used for cladding the second largest building in the world after the Pentagon: the Palace of the Parliament in Bucharest, Romania.







Coral slab, cut to size, polished

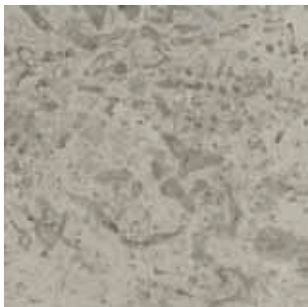
# TRANSYLVANIA CORAL SLAB

The Transylvania Coral limestone is as varied in its texture and adaptability as it is in its natural brilliance. Ranging in tones from light to blue to grey, its fantastic appearance is full of rich textural elements and large, dense fossilizations. This is a classic stone suitable for walls and floors.

Transylvania Coral stone offers a sense of tranquility and serenity. This is the most natural way to bring the ocean floor's history and intrigue right into one's home, as seen in the bathroom image here. Using Transylvania Coral slabs for wall cladding gives the full effect of the stone's seamless natural movement. For those who find peace and relaxation in the ocean's great depths, this is the ideal option for domestic projects.



Transylvania Coral







Transylvania V Grey slab, honed

## TRANSYLVANIA V GREY SLAB

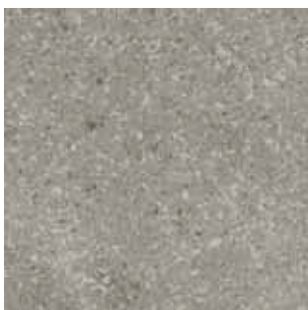
A Transylvania V Grey slab is reminiscent of an aerial image of the Earth. The stone has a variable grayscale texture, with movement of its dominant strong veins passing through across the slabs.

It is available as flooring or as wall coverings. It is a solid, sedimentary stone; a result of millions of years of shells and bones from sea creatures settling on the bottom of the sea. A practical and durable material that can be easily maintained, it makes a very popular choice because of its appearance and convenience.

This particular form of limestone is available in honed, polished and brushed versions. As seen in this peaceful image, this stone has a dominant presence when applied as a slab - one can stare into its textures and see the wonders of nature.



Transylvania V Grey









O U T D O O R   F L O O R I N G





## TRANSYLVANIA RICE

The light gray color of Transylvania Rice honed limestone gives it a contemporary appearance and its applications are appropriate for public projects or modern residential projects seeking a clean look.

Transylvania Rice features a multitude of textures, including specks of various complementary shades. Its minimalist surface translates to an applicable choice for interiors like offices, meeting rooms and public spaces, as seen in this image.

The texture of the stone contains various small, white fossils in a high density, which give the stone a homogenous look. The stone features indicate that the stone is very strong and suitable for applications in extreme weather conditions and external coverings of normal pavement conditions. It can also be used for stone cladding and flooring in all sizes and finishes.

Transylvania Rice





Transylvania Rice, straight edges cut, 60x120x2, honed





Transylvania Silver Bicolor, Roman Pattern, bush hammer brushed

## TRANSYLVANIA SILVER BICOLOR - ROMAN OPUS PATTERN

Transylvania Silver Bicolor tiles are a premium quality, natural limestone product. Available in cream variations and grey tones, these stone floor tiles have a peppering of fossilization and a bush hammer brushed finish, which give the surface and edges a classical antique appearance.

These Transylvania Silver Bicolor tiles are arranged in a Roman Opus pattern containing a range of tile sizes. They are suitable for domestic and light commercial use. Their versatility makes them ideal for a range of applications including conservatories, hallways, kitchen flooring and patio areas, as seen here.

The special finish of the stone with chipped corners offers a natural and antiqued look. This stone's anti-slip surface is also pleasant for footing because of its brushed finish.

Transylvania Silver Bicolor







## TRANSYLVANIA V GREY COMPOSITION

This dense, bush hammered brushed limestone comes in variations of light and dark grey with an interesting texturized and fossilized surface. The monochromatic combination has a uniquely soft appeal, blending both old and new design elements.

Its rough surface, which is dually anti-slip and soft to the touch is ideal for outdoor flooring especially by the swimming pool, seaside venues, as seen here, and other natural environments outdoors. This effect is achieved by brushing the stone and its edges.

Transylvania V Light



Transylvania V Dark









Transylvania Cobbles, 20x20x2, tumbled



## TRANSYLVANIA COBBLES, TUMBLED

Mixed Grey, Beige and Bicolor Transylvania Limestones are scattered with very little fossils of similar tones, contrasted by long, darker veins.

Small tiled stones inlaid for flooring are often associated with the primitive street pavements of old cities and gardens. Resido's cobblestone is a combination of limestone with a rustic finish, ideal for exterior applications, such as the surrounding of poolside areas and outdoor projects, as seen here.

In some interior projects it is used for antique bathroom flooring and rustic interior living rooms and halls. Antiqued limestone offers a beautiful effect of softness with a pleasantly aged appearance.

















O U T D O O R   W A L L S





## TRANSYLVANIA GREY

Transylvania Grey with a bush hammered finish has subtle grey tones marked by tiny grey fossils. In addition to its raw texture, which offers a natural feel, it also displays an inherently warm and light contemporary design.

Transylvania Grey bush hammer lends the appearance of an almost luxury gravel. Embedded with texture and brilliant hues reflecting nature's landscapes, this limestone is an ideal choice for front yards, entrances and patios. This particular finish is highly suitable for exterior cladding facades.

From luxury Mediterranean up to classic European style in a variety of arrangements and sizes, it can cover any wall, offering the appropriate design using natural stone that connects to the project environment in which it is located. Transylvania Grey bush hammer is available in straight or engraved edges.

Transylvania V Light



Transylvania V Dark





Transylvania Grey, 30x60x2, 2 cm grooved, bush hammer





Transylvania V Grey, straight cut edges 30 x free length x 2, honed

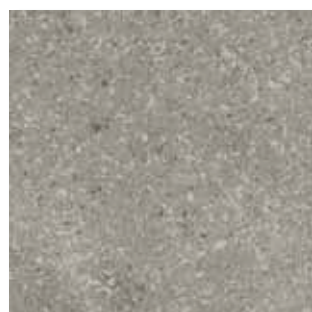


## TRANSYLVANIA V GREY

Transylvania V Grey has subtle grey tones with scattered little fossils of similar tones contrasted by long, darker veins. This material brings a feeling of light and space to contemporary exteriors, while still remaining clean and fresh.

Its interesting texture makes it an ideal blend of old and new and it is particularly useful for cladding, pedestal, facades and other outdoor arenas, such as the partition in the image seen here.

Transylvania V Grey





## TRANSYLVANIA SILVER

Transylvania Silver has dark grey tones with tiny grey fossils. Its veins are even darker in its grey color and it has continued movement along its tiles. Its natural, subtle veining paired with a glossy surface has a clean and contemporary feel, ideal for modern architectural projects.

This Carpathian stone, selected not only for its durability, but also for its inherent style - is even more seamless with a polished finish. This sophisticated stone offers a luxury backdrop for entryways, corridors, facades and wall dividers for outdoor use, as seen here.

This particular wall can be executed in all of Resido's available materials, in the same application and finish.

Transylvania Silver



Transylvania Silver, straight cut edges, 30x60x2 ,polished









Transylvania Light slabs, 2cm, honed

## TRANSYLVANIA LIGHT SLABS

The color of Transylvania Light slabs are off-white to ivory. They are characterized by strong and thick veins and also contain round fossils, scattered randomly on the stone. The light color of the stone is natural and classic and its dynamic veins, which offer continued and seamless movement along its slabs, give it a special character in large areas of the stone.

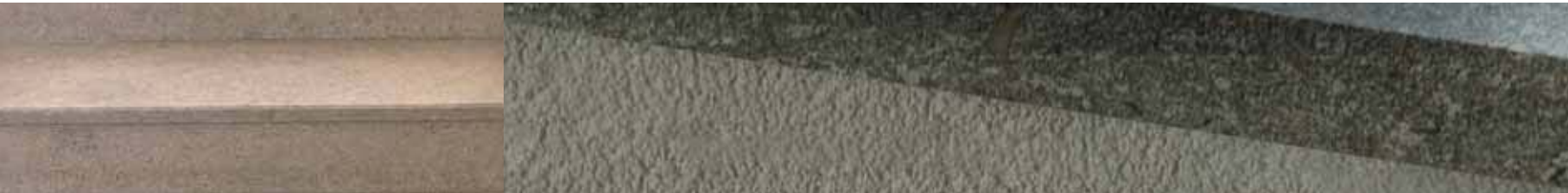
Transylvania Light honed slabs are brilliant in their matte finish and texture; distinguished by variations in shading and grey, while permeating a reflective energy.

It can be used for interior or exterior cladding in luxurious entryways, halls and other wall cladding applications.

Transylvania Light









## SPECIAL PRODUCTS





Transylvania Silver



Transylvania Silver

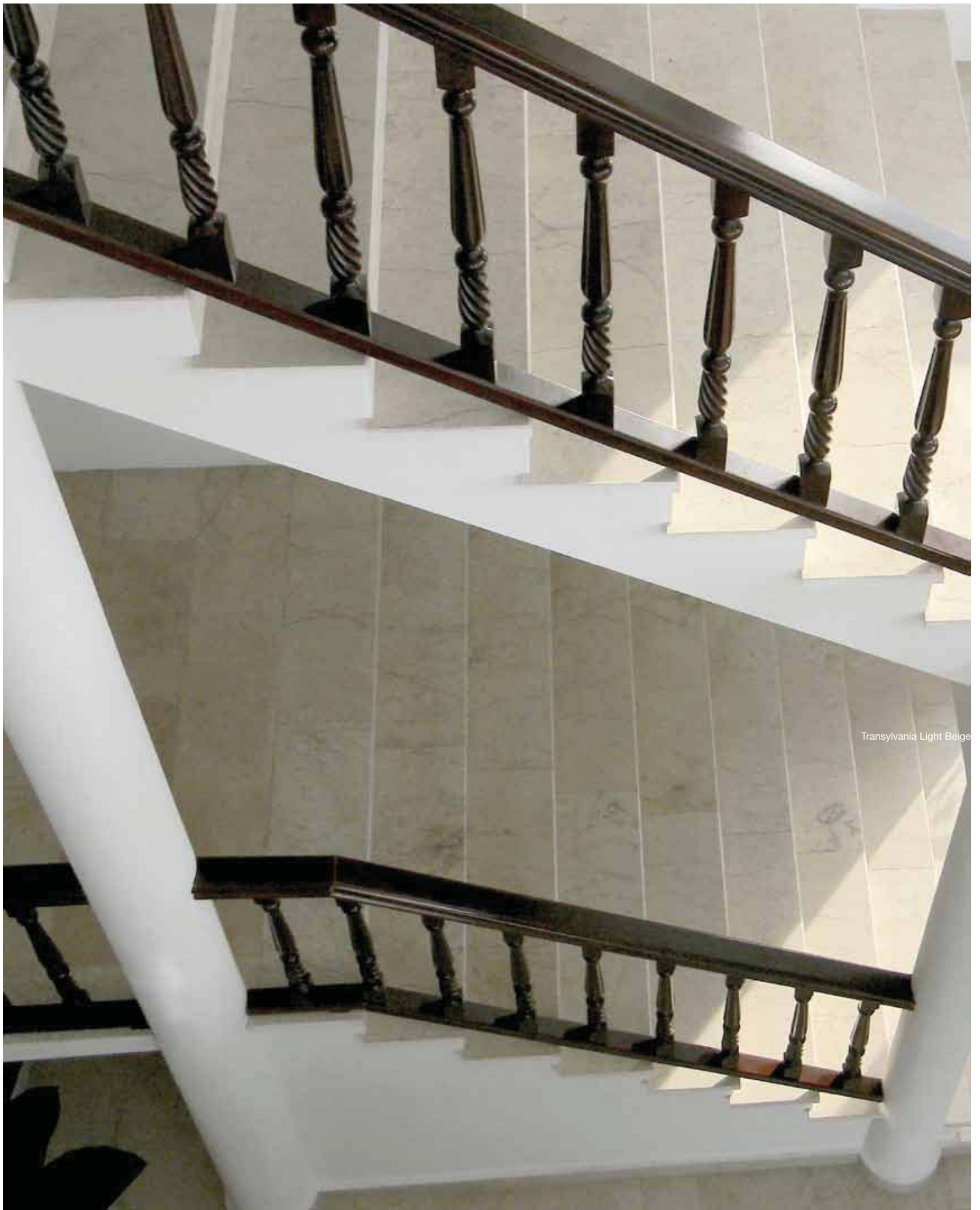


Transylvania Rice

## STAIRS

Resido Natural Stone offers a range of staircases pertaining to various colors, finishes, thickness and shape, providing a natural and elegant appearance. Transylvania Limestone can be used in commercial office buildings as well as in modern or rustic houses, according to client's demands. The difference between the application differs according to the shape, finish and thickness of the stairs.

As far as colors and finishes, the most popular selections are Transylvania Silver, Transylvania Rice honed and Transylvania Coral brushed. Transylvania Silver is well suited for use in high traffic areas both in domestic and commercial applications. Transylvania Rice honed is noted for its classic, tranquil color and texture and Transylvania Coral brushed is sought out for its natural beauty and durability.



Transylvania Light Beige





Transylvania V Grey, window top, straight, polished edges

## WINDOW TOPS

Transylvania Limestone offers a wide range of different shapes, colors and finishes for window tops. From light ivory tones to darker shades of grey, combined with various surface applications, the use of limestone for window tops enhances its natural connection to the outdoor view and the environment. Using natural stone for such applications is ideal for its warm appearance and its durable characteristics.



Transylvania V Grey window top with straight, polished edges

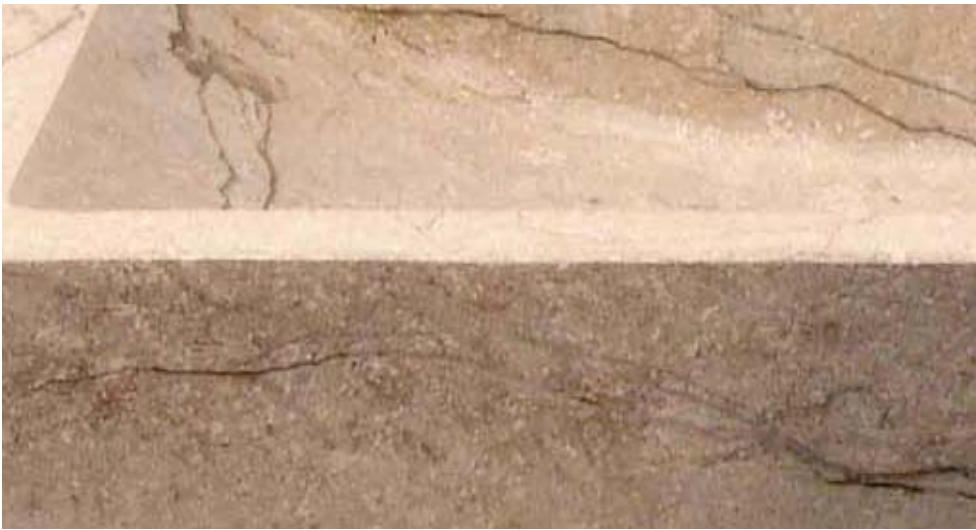




## SPECIAL PRODUCTS

Transylvania Limestone can be applied to specialized products such as sinks, vanity tops, particular moldings and skirting. Resido produces sinks, bathtubs, counters and moldings made from natural, hand-crafted stone, which can be ordered in specific sizes, materials and finishings. Any of these exclusive items can be ordered based on the customer's design and preference.







TECHNICAL SPECIFICATIONS



Technical specifications of Transylvania Rice

|   |           |
|---|-----------|
| Hardness (MOHS)                                       | 2,60      |
| Unit Weight (kg/m3) (Dry)                             | 2630      |
| Unit Weight (kg/m3) (Saturated)                       | 2528      |
| Water Absorption at Atmosphere Pressure by Weight (%) | 1,54      |
| Water Absorption in Hot Water (%)                     | 1,7       |
| Compressive Strength Rc(N/mm2) (Resistance to frost)  | 70,5      |
| Bending Tensile Strength (kg/cm3)                     | 6,15      |
| Porosity (%)  | 4,5       |
| Resistance to frost- defrost (%) (50 cycles)          | 0,5       |
| The Average in Abrasion Strength (cm3/50 cm2)         | 2nd class |



Technical specifications of Transylvania Silver Bicolor

|   |           |
|---|-----------|
| Hardness (MOHS)                                       | 2,67      |
| Unit Weight (kg/m3) (Dry)                             | 2700      |
| Unit Weight (kg/m3) (Saturated)                       | 2696      |
| Water Absorption at Atmosphere Pressure by Weight (%) | 1,28      |
| Water Absorption in Hot Water (%)                     | 1,48      |
| Compressive Strength Rc(N/mm2) (Resistance to frost)  | 77,5      |
| Bending Tensile Strength (kg/cm3)                     | 6,30      |
| Porosity (%)  | 4,5       |
| Resistance to frost- defrost (%) (50 cycles)          | 0,3       |
| The Average in Abrasion Strength (cm3/50 cm2)         | 2nd class |



Technical specifications of Transylvania Silver

|   |           |
|---|-----------|
| Hardness (MOHS)                                       | 2,67      |
| Unit Weight (kg/m3) (Dry)                             | 2700      |
| Unit Weight (kg/m3) (Saturated)                       | 2696      |
| Water Absorption at Atmosphere Pressure by Weight (%) | 1,54      |
| Water Absorption in Hot Water (%)                     | 1,7       |
| Compressive Strength Rc(N/mm2) (Resistance to frost)  | 70,5      |
| Bending Tensile Strength (kg/cm3)                     | 6,15      |
| Porosity (%)  | 4,5       |
| Resistance to frost- defrost (%) (50 cycles)          | 0,5       |
| The Average in Abrasion Strength (cm3/50 cm2)         | 2nd class |



Technical specifications of Transylvania V Grey

|   |           |
|---|-----------|
| Hardness (MOHS)                                       | 2,63      |
| Unit Weight (kg/m3) (Dry)                             | 2712      |
| Unit Weight (kg/m3) (Saturated)                       | 2594      |
| Water Absorption at Atmosphere Pressure by Weight (%) | 1,77      |
| Water Absorption in Hot Water (%)                     | 1,70      |
| Compressive Strength Rc(N/mm2) (Resistance to frost)  | 58,8      |
| Bending Tensile Strength (kg/cm3)                     | 6,30      |
| Porosity (%)  | 4,5       |
| Resistance to frost- defrost (%) (50 cycles)          | 0.4       |
| The Average in Abrasion Strength (cm3/50 cm2)         | 2nd class |



Technical specifications of Transylvania Light

|   |           |
|---|-----------|
| Hardness (MOHS)                                       | 2,61      |
| Unit Weight (kg/m3) (Dry)                             | 2717      |
| Unit Weight (kg/m3) (Saturated)                       | 2470      |
| Water Absorption at Atmosphere Pressure by Weight (%) | 2,78      |
| Water Absorption in Hot Water (%)                     | 3,33      |
| Compressive Strength Rc(N/mm2) (Resistance to frost)  | 55,6      |
| Bending Tensile Strength (kg/cm3)                     | 5,85      |
| Porosity (%)  | 4,8       |
| Resistance to frost- defrost (%) (50 cycles)          | 0,7       |
| The Average in Abrasion Strength (cm3/50 cm2)         | 2nd class |



Technical specifications of Transylvania Coral

|   |           |
|---|-----------|
| Hardness (MOHS)                                       | 2,59      |
| Unit Weight (kg/m3) (Dry)                             | 2650      |
| Unit Weight (kg/m3) (Saturated)                       | 2596      |
| Water Absorption at Atmosphere Pressure by Weight (%) | 1,1       |
| Water Absorption in Hot Water (%)                     | 1,6       |
| Compressive Strength Rc(N/mm2) (Resistance to frost)  | 58,1      |
| Bending Tensile Strength (kg/cm3)                     | 6,10      |
| Porosity (%)  | 4,2       |
| Resistance to frost- defrost (%) (50 cycles)          | 0,6       |
| The Average in Abrasion Strength (cm3/50 cm2)         | 2nd class |



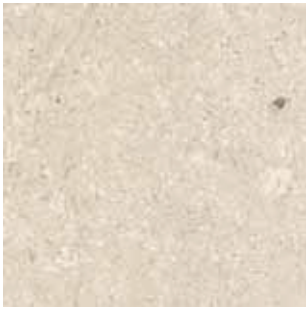
Technical specifications of Podeni

|   |      |
|---|------|
| Hardness (MOHS)                                       | -    |
| Unit Weight (kg/m3) (Dry)                             | 2700 |
| Unit Weight (kg/m3) (Saturated)                       | 2123 |
| Water Absorption at Atmosphere Pressure by Weight (%) | 9,4  |
| Water Absorption in Hot Water (%)                     | 14,2 |
| Compressive Strength Rc(N/mm2) (Resistance to frost)  | 15,6 |
| Bending Tensile Strength (kg/cm3)                     | -    |
| Porosity (%)  | 21   |
| Resistance to frost- defrost (%) (50 cycles)          | 1,7  |
| The Average in Abrasion Strength (cm3/50 cm2)         | -    |





Transylvania Light  
P. 16, 30, 38, 40, 44, 98



Transylvania Light Beige  
P. 32, 34, 46, 48



Transylvania Light Bicolor  
P. 21, 23



Transylvania Brown  
P. 32, 34, 46, 48



Transylvania Rice  
P. 24, 28, 30, 40, 44, 80



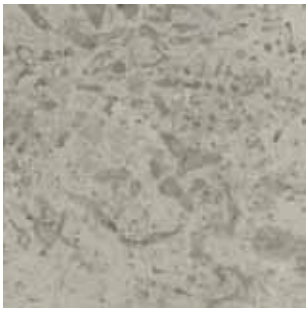
Transylvania Rice Beige  
P. 32, 34, 46, 48



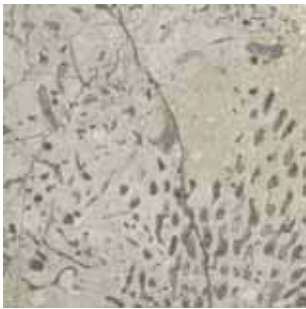
Transylvania Rice Bicolor  
P. 40, 44



Transylvania V Dark  
P. 28, 42, 84, 92



Transylvania Coral  
P. 36, 40, 44, 74



Transylvania Deep Coral  
P. 20



Transylvania Silver  
P. 16, 22, 28, 40, 44, 96



Transylvania Silver Bicolor  
P. 26, 82



Transylvania Golden Wheat  
P. 32, 34, 46, 48



Podeni Graffiatura  
P. 72



Transylvania Grey Bush Hammered  
Grooved  
P. 92



Graffiatura  
P. 70, 72



Transylvania Grey Grooved  
P. 37



Transylvania Bricks  
P. 62, 64



Transylvania Bicolor Split Face  
P. 54



Transylvania Grey Split Face  
P. 56, 58



Podeni Split Face  
P. 60



Villa and Opus Patterns  
P. 44, 46, 48, 50, 82



Transylvania Cobbles Tumbled  
P. 86, 88



Transylvania Stairs and Window Tops  
P. 102, 104



Moldings and Skirting  
P. 105



Transylvania Special Products  
P. 105



Slabs  
P. 74, 76, 98





WWW.RESIDO.RO

E: OFFICE@RESIDO.RO

T: +40-264-590-821 / M: +40-74-8888-126

STR. CHEILE BACIULUI 924A, 407055, BACIU, CLUJ, ROMANIA

